

ADEPT MINI

BILAYER R&D PRESS



SINGHANIA[®]
TABLETING

50 YEARS OF EXPERTISE



The Adept Bi-Layer Lab press is a compact rotary tablet press used mainly for development of new products and scale up requirements. It can be used for single layer as well as bilayer tablets. It is also suitable for small batch production. It has features as pneumatic first layer ejection, force monitoring and auto rejection. It also has provision for multi tooling 5D + 5B type.

6 TON LOAD CAPACITY

This press is designed to take full load of 6 Tons for compressing bigger tablets.

- 3 HP Motor/VFD & branded heavy duty gear box
- Centre Drive Mechanism for minimal maintenance

FOOD GRADE GRAVITY FEEDER & ROTARY FEEDER

The Multi Chamber Gravity Feeder is made of polymer and ensures no metal contamination in tablets.

- Provision for Rotary Feeder
- Separate VFD for individual rotary feeder speed control
- Quick tool-less change over from gravity to rotary feeder

MONO LAYER / BI LAYER CAPABILITY

Machine can be used for Mono Layer as well Bi Layer products.

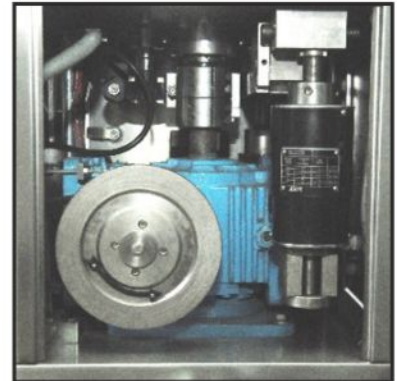
Main Compress + Pre Compress – Main Compression with 60kN & Pre Compression with 20kN capacity.

- Upper & Lower Roller with bearing to prevent jamming
- Upper Punch Penetration available for both pre & main compression

TURRET

Precision machined turret with thrust bearing

- Turret with electrolysis nickel plating. Electrolysis nickel plating provides excellent protection against corrosion from salt, acids, alkali, humidity, temperature etc.
- Turret can be provided with 'D', 'B' or combination 'D' & 'B' tooling
- Turret can be provided with SS316 Die Table (Optional)
- Ball Spring Plugs for holding lower punches compression



BI LAYER TABLETS

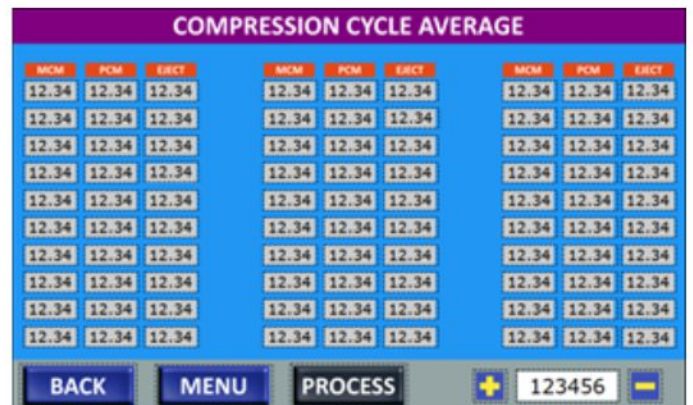
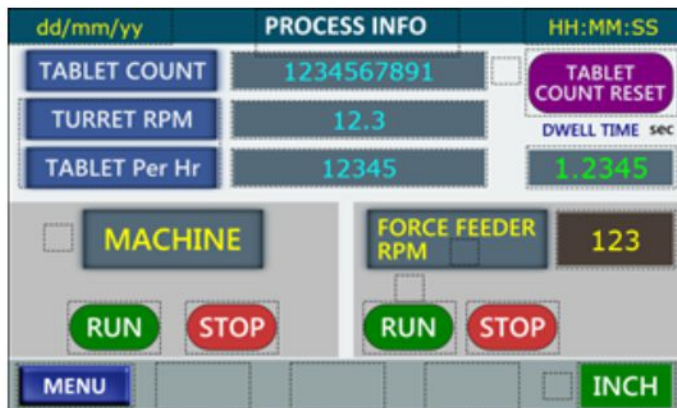
- Suitable for single as well as bi layer tablets
- Suction provision in feeders to prevent mixing in bi layer tablets
- First layer ejection by pneumatic system



Bi-layer Tablets

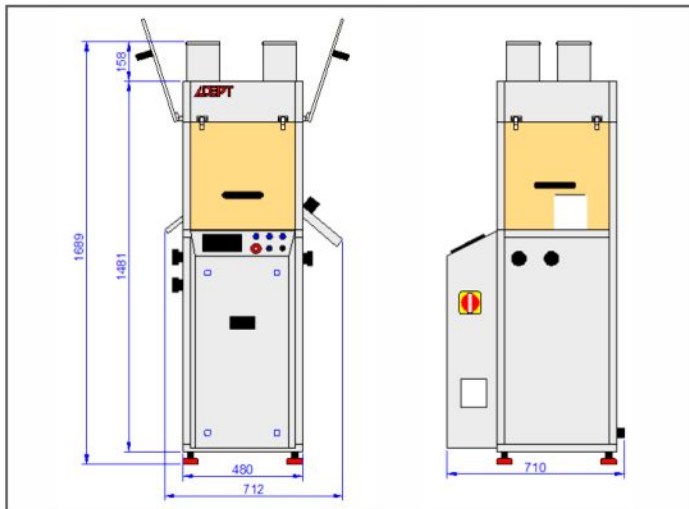
AUTOMATION (OPTIONAL)

- 7" Multi-Touch Display with PLC Control
- Force Measurement System for sensing & recording Main, Pre Compression & Ejection Force of each punch
- Tablet sampling & rejection by Pneumatic Flap System
- 3 Level Supervisory Control
- 1st Layer Auto Sampling System
- Dwell time display in real time



TECHNICAL DETAILS

| MODEL | ATR D-D-9 | ATR B-B-11 | ATR R&D |
|--------------------------|------------------------|------------|-------------|
| No Of Stations | 9 | 11 | 5D + 5B |
| Type Of Tooling | D | B | D & B |
| Max Round Tablet Size | 25mm | 18.5mm | 25 / 18.5mm |
| Max Caplet Length | 25mm | 19mm | 25 / 19mm |
| RPM | 10 - 36 | 10 - 36 | 10 - 36 |
| Main Pressure | 60 kN | 60 kN | 60 kN |
| Pre Pressure | 20 kN | 20 kN | 20 kN |
| Max Depth Of Fill | 18mm | 18mm | 18mm |
| Second Layer Penetration | 3mm to 8mm | | |
| Main Motor | 3 HP | 3 HP | 3 HP |
| Max Output/Hour | 19440 | 23760 | 10800 |
| Machine Dimensions | 71 cm x 56 cm x 178 cm | | |
| Machine Weight | 550kg | | |



OTHER FEATURES

- Outside control for main, pre compression and weight setting
- Hopper with slide valve
- Compression guards with sensor for safety interlock
- All electrical Schneider or equivalent make
- All pneumatics components Festo make

