



SINGHANIA[®]
TABLETING

50 YEARS OF EXPERTISE

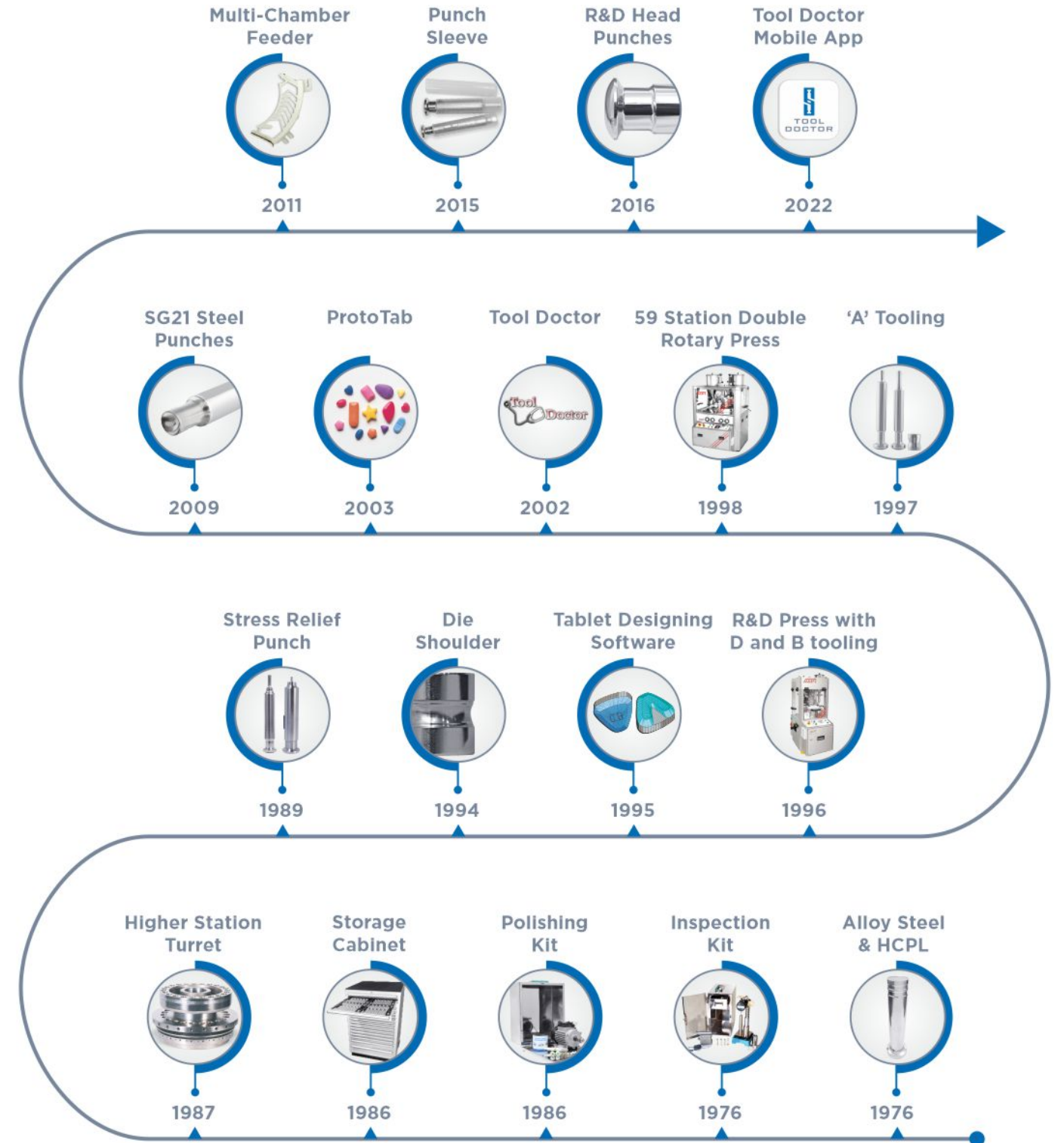
SINGHANIA TABLETING group comprises of ADEPT ENGINEERS, CONCEPT ENGG, CONSONANT ENGINEERING, IMPERIAL PHARMACHINES and PHARMACHINE INDIA.

The group was formed in 1968 on a commitment to provide high quality Punches & Dies to the pharmaceutical industry. Our passion for quality and adherence to IPT / Euro norms ensures that the tooling are both precise and consistent. Today we are the most reputed manufacturer of Punches & Dies in India.

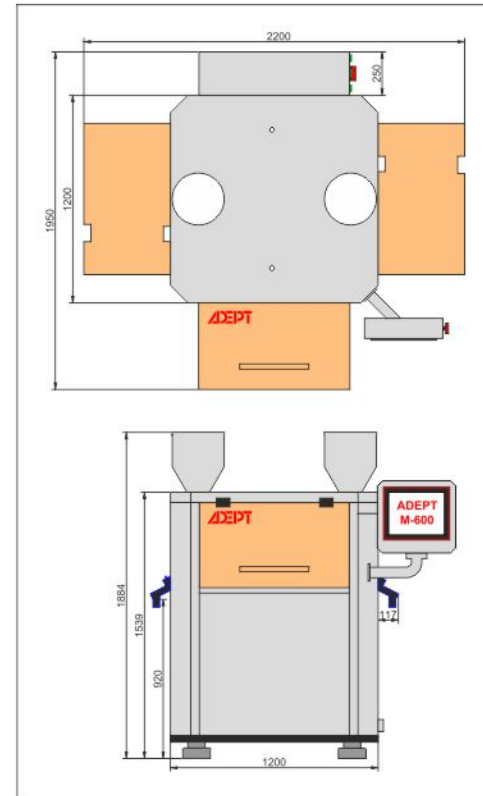
In 1986, we capitalised on our expertise and knowledge in manufacturing Punches & Dies to develop ADEPT tablet presses. ADEPT Tablet Presses are remarkably robust & user friendly. Special emphasis has been given to safety & durability while designing these machines.



INNOVATIONS



ADEPT M-600



SALIENT FEATURES

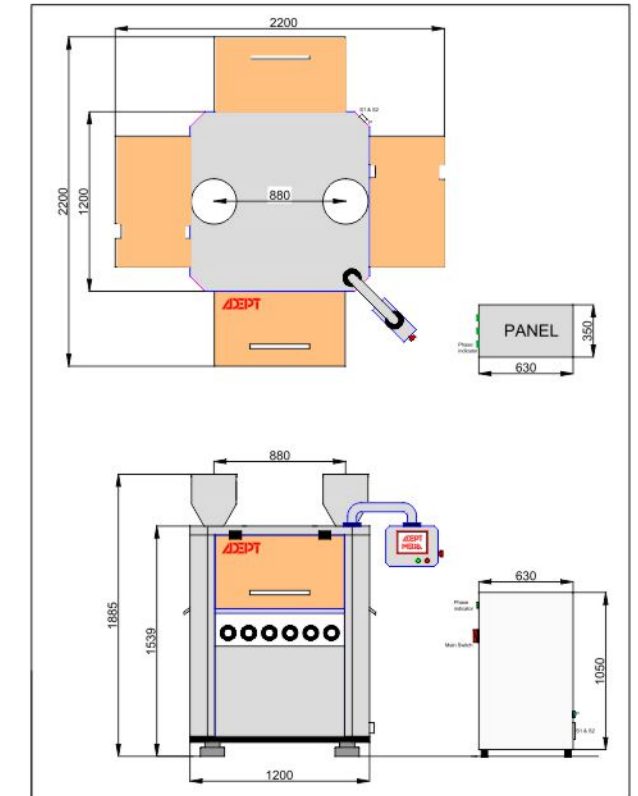
- Fully automated high speed press
- Force measurement and AWC
- Auto rejection and sampling
- 21 CFR part 11 compliance
- Report generation in PDF
- 3 Level Password system.
- Weight and thickness control by HMI
- Center drive double side press
- 10 tons main and pre compression
- Bilayer provision

TECHNICAL SPECIFICATIONS

MODEL	STATION	MAX PRESSURE IN TONS	ROUND - MAX DIA	CAPLET - MAX LENGTH	PUNCH			DIE			MOTOR*		TABLET OUTPUT PER HOUR	
					TYPE	DIA	HEIGHT	TYPE	DIA	HEIGHT	HP	RPM	10 RPM	40 RPM
M600 D-D-45	45	10.0	25.0	25.0	D	25.40	133.6	D	38.10	23.81	10	1440	54000	216000
M600 B-B-61	61	6.5	18.5	19.0	B	19.05	133.6	B	30.16	22.22	10	1440	72000	292800
M600 B-BB-75	75	6.5	13.0	16.0	B	19.05	133.6	BB	24.00	22.22	10	1440	90000	360000
M600 A-A-101	101	6.5	10.0	NA	A	12.70	NA	A	17	NA	10	1440	1,20,000	4,80,000

*Specifications subject to change without notice

ADEPT MEGA

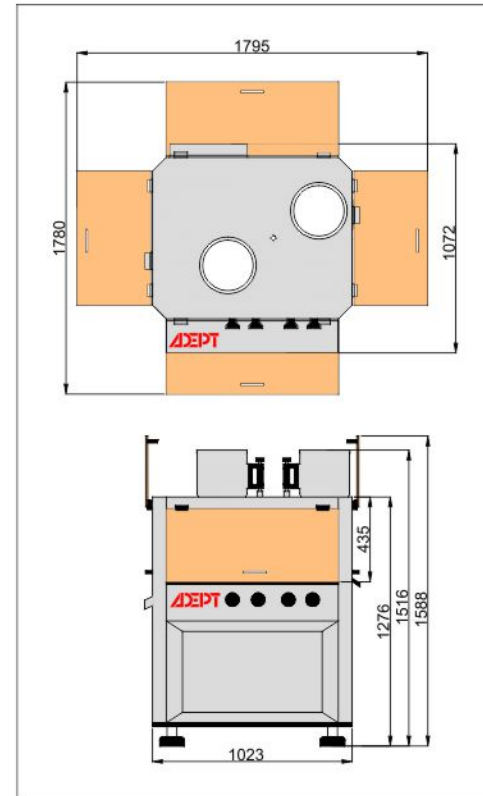


SALIENT FEATURES

- Centre Drive without internal gear system
- 10 Tons Pre-Compression Force
- 3 Chamber Bottom Driven Rotary Feeder
- Food Grade Multi-Chamber Gravity Feeder
- Bi-Layer Capability
- Electronically Controlled pressure monitoring system
- 21 CFR Part 11 Compliant

TECHNICAL SPECIFICATIONS

MODEL	STATION	MAX PRESSURE IN TONS	ROUND - MAX DIA	CAPLET - MAX LENGTH	DEPTH OF FILL (MM)	PUNCH			DIE			MOTOR*		TABLET OUTPUT PER HOUR	
						TYPE	DIA	HEIGHT	TYPE	DIA	HEIGHT	HP	RPM	10 RPM	40 RPM
AMR D-D-45	45	10.0	25.0	25.0	20.0	D	25.40	133.6	D	38.10	23.81	15	1440	54,000	2,16,000
AMR B-B-61	61	6.5	18.5	19.0	18.0	B	19.05	133.6	B	30.16	22.22	10	1440	72,000	2,88,000
AMR B-BB-75	75	6.5	13.0	16.0	18.0	B	19.05	133.6	BB	24.00	22.22	10	1440	90,000	3,60,000
AMR A-A-101	101	6.5	10.0	NA	16.0	A	12.7	100.0	A	17.00	20.00	10	1440	1,20,000	4,80,000



SALIENT FEATURES

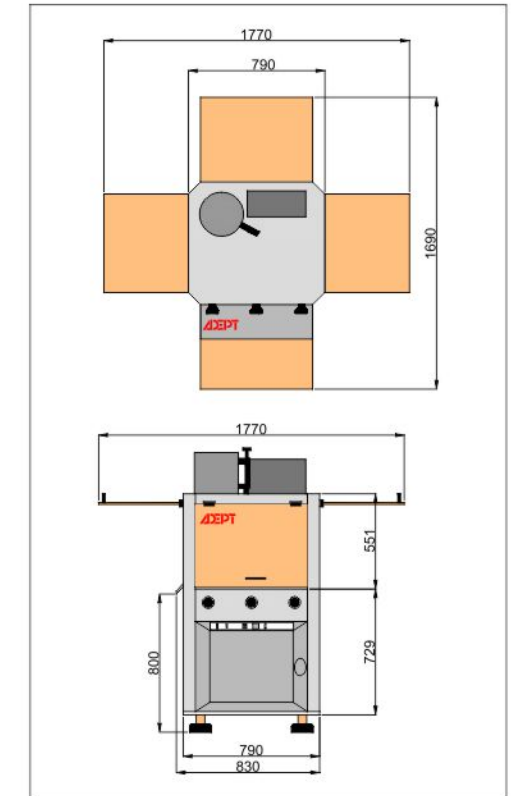
- Upto 59 stations for 200,000 tablets per hour
- Food grade multi-chamber gravity feeder
- Bi-layer capability with 1st layer sampling
- Front control system
- 5 HP motor for higher starting torque
- Auto lubrication

TECHNICAL SPECIFICATIONS

MODEL	STATION	MAX PRESSURE IN TONS	ROUND - MAX DIA	CAPLET - MAX LENGTH	DEPTH OF FILL (MM)	PUNCH			DIE			MOTOR*		TABLET OUTPUT PER HOUR	
						TYPE	DIA	HEIGHT	TYPE	DIA	HEIGHT	HP	RPM	@10 RPM	@30 RPM
ADR D-D-27	27	10.0	25.0	25.0	17.5	D	25.40	133.6	D	38.10	23.81	5	1440	32,400	97,200
ADR B-B-35	35	6.5	18.5	19.0	17.5	B	19.05	133.6	B	30.16	22.22	5	1440	42,000	1,26,000
ADR B-BB-45	45	6.5	13.0	16.0	17.5	B	19.05	133.6	BB	24.00	22.22	5	1440	54,000	1,62,000
ADR A-A-59	59	6.5	10.0	NA	16.0	A	12.70	100.0	A	17.00	20.00	5	1440	70,800	2,12,400
ADR R&D 30	15	10.0	25.0	25.0	17.5	D	25.40	133.6	D	38.10	23.81	5	1440	18,000	54,000
	15	10.0	18.5	19.0	17.5	B	19.05	133.6	B	30.16	22.22	5	1440	18,000	54,000

* These Specifications are different for Open Model.

*Specifications subject to change without notice

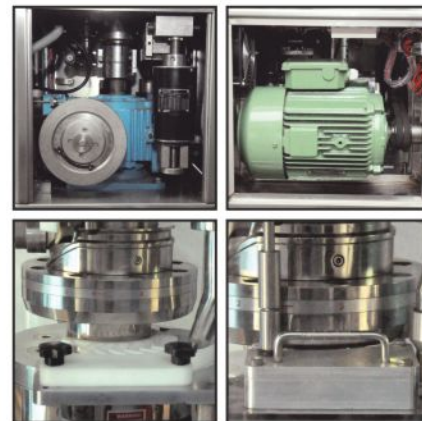
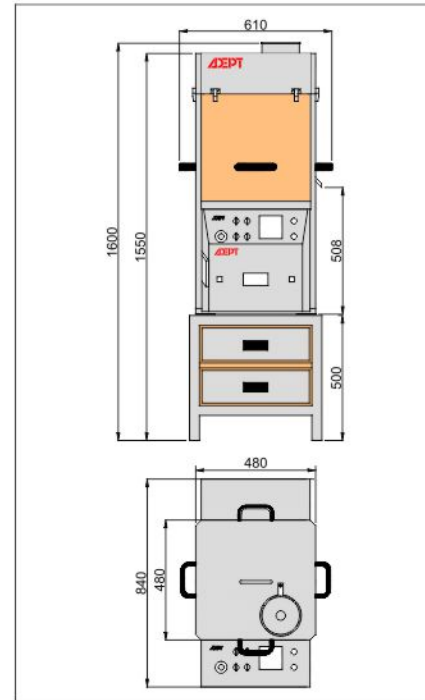


SALIENT FEATURES

- Centre drive without internal gear system
- 10 tons main compression
- 3 chamber rotary feeder
- Food grade multi-chamber gravity feeder
- Compression force measurement system
- Auto lubrication

TECHNICAL SPECIFICATIONS

MODEL	STATION	MAX PRESSURE IN TONS	ROUND TABLET MAX DIA	CAPLET MAX LENGTH	DEPTH OF FILL (MM)	PUNCH			DIE			MOTOR*		TABLET OUTPUT PER HOUR	
						TYPE	DIA	HEIGHT	TYPE	DIA	HEIGHT	HP	RPM	@10 RPM	@50 RPM
ASR D-D-20	20	10.0	25.0	25.0	20.0	D	25.40	133.6	D	38.10	23.81	5	1440	12,000	60,000
ASR B-B-26	26	6.5	18.5	19.0	20.0	B	19.05	133.6	B	30.16	22.22	5	1440	15,600	78,000
ASR B-BB-32	32	6.5	13.0	16.0	20.0	B	19.05	133.6	BB	24.00	22.22	5	1440	19,200	96,000
ASR R&D 20	10	10.0	25.0	25.0	20.0	D	25.40	133.6	D	38.10	23.81	5	1440	6,000	30,000
	10	10.0	18.5	19.0	20.0	B	19.05	133.6	B	30.16	22.22	5	1440	6,000	30,000



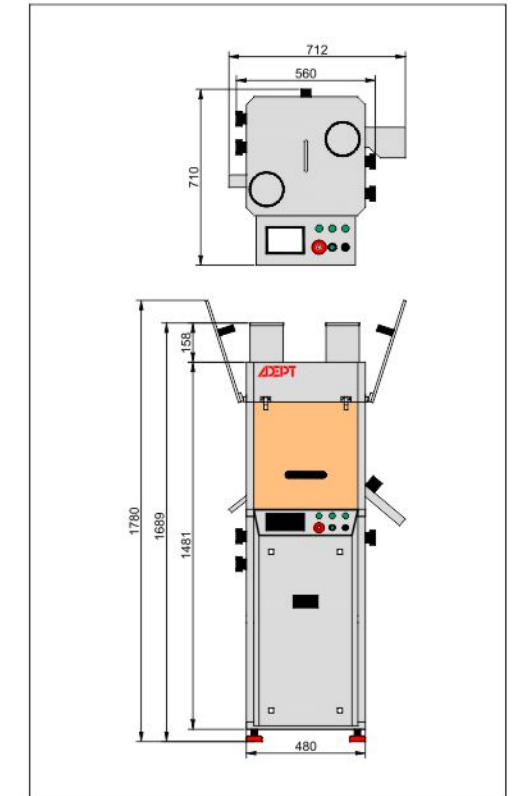
SALIENT FEATURES

- **6 Tons Load Capacity** - This press is designed to take full load of 6 tons for compressing bigger tablets
- **Food Grade Gravity Feeder** - The Multi Chamber Gravity Feeder is made of polymer and ensures no metal contamination in tablets
- **Rotary Feeder and Pre Compression** to help make pilot scale batches
- 3 HP motor and bigger gearbox

TECHNICAL SPECIFICATIONS

MODEL	STATION	TYPE OF TOOLING	ROUND TABLET MAX DIA	CAPLET MAX LENGTH	MAIN COMPRESSION FORCE (TONS)	PRE-COMPRESSION FORCE (TONS)	DEPTH OF FILL (MM)	MOTOR* HP	TABLET OUTPUT PER HOUR		DIMENSIONS	WEIGHT
									@ 10 RPM	@ 30 RPM		
ATR D-D-8	8	D	25.0	25.0	6.0	2.0	18.0	3	4,800	14,400	L : 65cm W: 85 cm H: 120 cm	Net: 450Kgs Gross: 600Kgs
ATR B-B-10	10	B	18.5	19.0	6.0	2.0	18.0	3	6,000	18,000		
ASR R&D-8	4	D	25.0	25.0	6.0	2.0	18.0	3	2,400	7,200		
	4	B	18.5	19.0	6.0	2.0	18.0	3	2,400	7,200		

* These Specifications are different for Open Model.



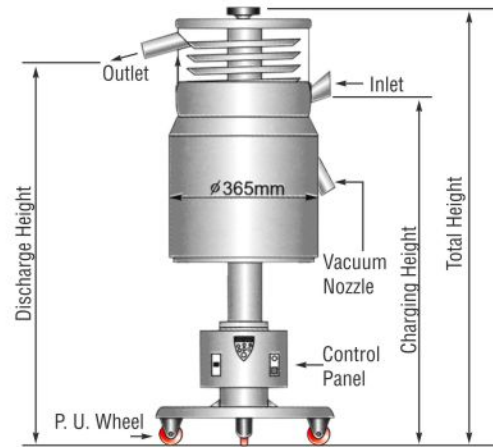
SALIENT FEATURES

- Mono and bilayer tablets
- 6 tons capacity
- Food grade multi chamber feeder for both layers
- Rotary feeder for both layers
- 1st layer auto sampling
- Dwell time display
- Force measurement system
- Auto rejection and sampling
- 3 Level Password system.

TECHNICAL SPECIFICATIONS

MODEL	STATION	TYPE OF TOOLING	ROUND TABLET MAX DIA	CAPLET MAX LENGTH	MAIN COMPRESSION FORCE (TONS)	PRE-COMPRESSION FORCE (TONS)	DEPTH OF FILL (MM)	SECOND LAYER PENETRATION	MOTOR* HP	TABLET OUTPUT PER HOUR	DIMENSIONS	WEIGHT
ATR D-D-9	9	D	25.0	25.0	6.0	2.0	18.0	3mm to 8mm	3	19440	L : 71cm W: 56 cm H : 178 cm	550 Kg
ATR B-B-11	11	B	18.5	19.0	6.0	2.0	18.0	3mm to 8mm	3	23760		
ASR R&D	5	D	25.0	25.0	6.0	2.0	18.0	3mm to 8mm	3	5400		
	5	B	18.5	19.0	6.0	2.0	18.0	3mm to 8mm	3	5400		

ELEVATING DEDUSTER



Schematic Diagram



Spiral

Control panel with A.C. drive

The Elevating De-burring & De-dusting machine has been designed to ensure proper removal of burr and dust from all shapes of tablet. This machine also elevates the tablet so that users can connect an online metal check and collect the final tablets in a bigger container.

SALIENT FEATURES

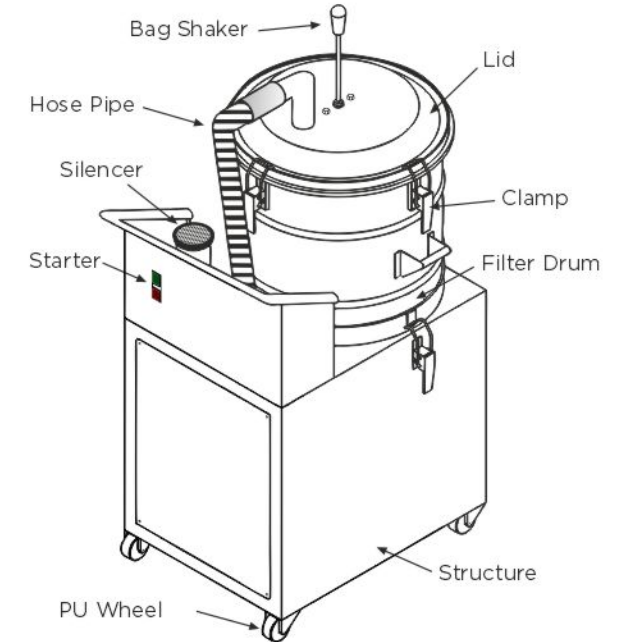
- Compact design with small footprint
- S.S. construction to meet GMP norms
- Raises the tablets and tumbles for effective de-dusting
- In-built orientation of charging & discharging
- Discharge chute can be rotated to suit Tablet Press outlet
- Quick dismantling & assembling (within 1 min.)
- S.S. 316 contact parts
- Low maintenance
- PU wheels with S.S. Body
- Vacuum connection to increase de-dusting efficiency

TECHNICAL SPECIFICATIONS

MODEL	AED S 4-DISH
Inlet Height	775 to 975 mm
Outlet Height	780 to 980 mm
Output (6mm Tablet/hour)	325000
Tablet Diameter - Minimum	5 mm
Maximum	25 mm
Dedusting Length (approx)	2.25 m
Speed	Adjustable
Intensity	Adjustable
Inlet Chute Size	130 x 100 mm
Outlet Chute Diameter	50 mm
Motor Specifications	0.25HP / 2800RPM / 230V / 3PH (2nos.)
Power Supply	230V / 1PH
Machine Size LxWxH (mm)	550 x 450 x 920
Net Weight (kgs)	75
Total Height	920mm to 1120mm

*Specifications subject to change without notice

DUST COLLECTOR

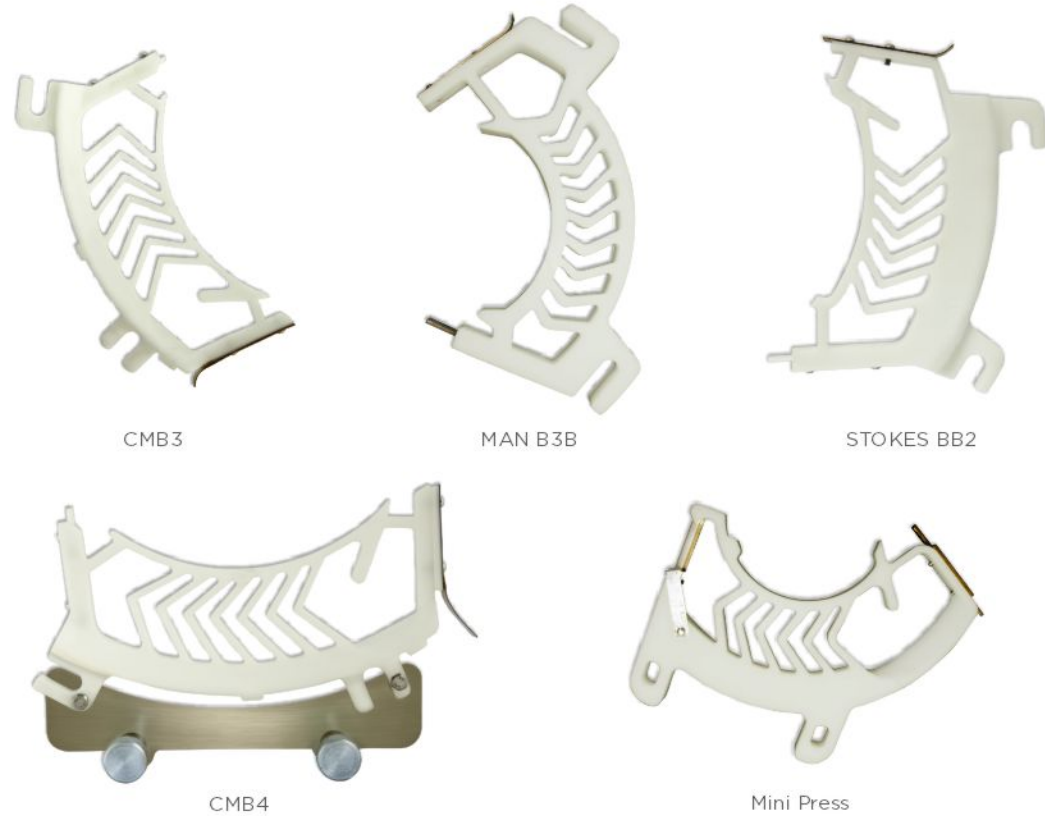


SALIENT FEATURES

- All Stainless Steel construction with SS316 contact parts
- Dust collection area is isolated from suction pump and motor
- Collection drum is easily detachable and can be taken to washing area
- Provision to connect Dedusters and Vacuum cleaning hose

TECHNICAL SPECIFICATIONS

MODEL	100 CFM	200 CFM
SUCTION CAPACITY	120 CFM (240m ³ /hr)	235 CFM (400m ³ /hr)
NO. OF BAGS	1	1
FILTRATION AREA	5,496 sq. cm.	5,496 sq. cm.
DUST COLLECTION AREA	71.5 Ltrs	71.5 Ltrs
COLLECTION DRUM	SS 316	SS 316
CONSTRUCTION	SS 304	SS 304
INLET	4 nos. - 38 mm Dia.	4 nos. - 38 mm Dia.
MOTOR RATING	2 HP / 3 Phase	3 HP / 3 Phase
DIMENSIONS L x W x H (MM)	490 x 900 x 1340	490 x 900 x 1340



The Food Grade Gravity Feeder is manufactured from a food grade polymer, which not only minimises metal contamination but also eliminates black particles generated from metal feeders. The “Multi Chamber” design ensures that the die cavity is always covered with granules, the extra chambers make the granules move in a serpentine motion and increases filling time.

KEY ADVANTAGES

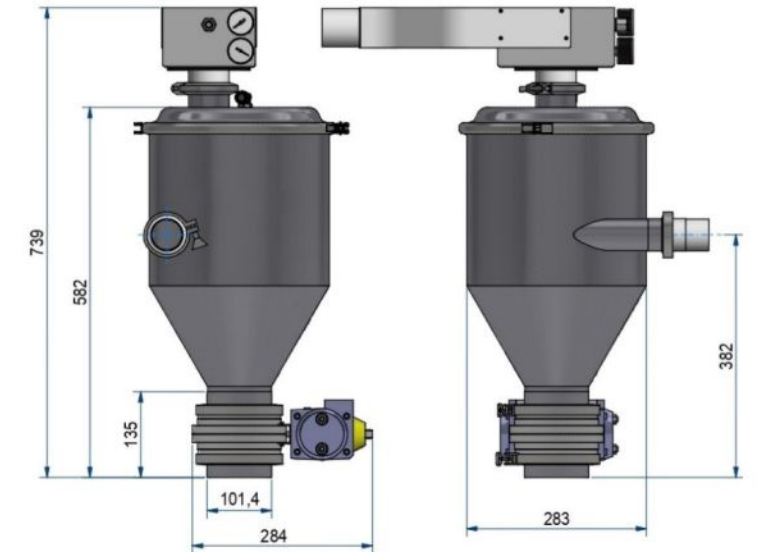
- Minimises metal contamination
- Eliminates black particles
- Reduces weight variation
- Auto adjusting scrapper blade
- Light weight and easy to fit
- Does not bend like metal feeders due to mishandling
- Increases RPM of your tablet press

AVAILABLE FOR

- ADEPT: ADR, ADR Bi-Layer, ASR, MEGA, Mini
- CADMACH: CMD3, CMB3 & CMB4
- MANESTY: D3, D4, BB3, BB4, B3B
- STOKES: D3, BB2, B2

*Specifications subject to change without notice

VENTURI TYPE



SALIENT FEATURES

- The system is CE and FDA certified
- Loading units made in AISI 316 stainless steel
- Capacitive Level Control on the Receiver system
- Bag filter unit made by antistatic food polyester FDA certified
- Filter Cleaning System automatic

TECHNICAL SPECIFICATIONS

MODEL	
OPERATING TEMPERATURE (°C)	+0 / +60
CAPACITY	500kg/hr
WEIGHT (KG)	22
PROTECTION CLASS	IP54
AIR PRESSURE (BAR)	5.5 (min.) - 6 (max.)
AIR CONSUMPTION AT 6 BAR (NL/MIN)	700
NOISE LEVEL (dBA)	60 -62
MINIMUM PRODUCT GRANULOMETRY (µm)	> 1

SPARES



*Specifications subject to change without notice

TOOL DOCTOR



Tool Doctor is an application that aims at providing solutions to tableting issues. The app captures most of the common issues faced during tableting e.g. Sticking, Picking, Tablet Chipping, Black Particles, Weight Variation.... and gives the possible reasons and solutions for those, It covers problems that could be related to Tablet Quality, Punches & Dies, Tablet Press, Formulation and Operational Parameters.

The Tool Doctor application also provides technical information on Tableting Cycle, Punches & Dies Specifications, Tablet Designing, Steel & Coating Options and Punches & Dies Maintenance.

PUNCHES & DIES



Special Punches & Dies



Special Shaped Tooling



Core Rod Tooling





ADEPT

SINGHANIA[®]
TABLETING

MANUFACTURED IN MUMBAI, INDIA
E-mail: contact@singhaniatableting.com | Web: www.singhaniatableting.com
www.facebook.com/SinghaniaTableting | www.youtube.com/user/SinghaniaTableting